

# Transceiver User Guide

## Technical Document



**SKYLANE**  
**OPTICS®**

For your product safety, please read the following information carefully before manipulating the SFP transceiver :



### CAUTION !

THE CONTENT OF THIS USER GUIDE MUST BE CAREFULLY FOLLOWED IN ORDER FOR THE **CUSTOMER WARRANTY TO BE VALID.**



### ESD

THIS DEVICE IS SUSCEPTIBLE TO BE DAMAGED DUE TO **ELECTROSTATIC DISCHARGE (ESD)**.

A STATIC FREE ENVIRONMENT, FOLLOWING STANDARD **ANSI/ESD S20/20**, IS HIGHLY NECESSARY.



### LASER SAFETY

RADIATION EMITTED BY LASER DEVICES CAN BE DANGEROUS FOR HUMAN EYES. AVOID EYE EXPOSURE TO DIRECT OR INDIRECT RADIATION.



### Electrostatic Discharge Sensitivity (ESD)

All transceivers are ESD sensitive devices. ESD is a harmless phenomenon for people but can be destructive for electronic circuits.

1. ESD equipment shall be worn at all the time while handling the Skylane Optics® transceiver.
2. Never touch the electrical connector, as it is extra sensitive to ESD.

> ESD WRIST STRAP



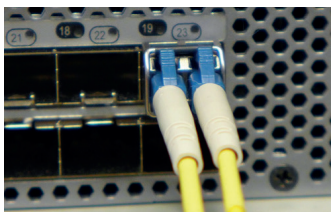
> TRANSCEIVER DUST CAP

### Cleanliness

Fiber optic devices are very sensitive to dust, dirt and grease.

1. Always keep the transceiver dust cap on the Skylane Optics® transceiver when the device is not connected to the fiber.
2. Make sure the fiber is clean before inserting it in the transceiver by using specially designed fiber cleaning devices and visual inspection. (More info see our Cleaning Kit document)

Our internal procedures for transceiver cleaning and cleanliness checking are in accordance with IEC 61300-3-35 ED.1.0. standard.



> FIBER CONNECTED TO TRANSCEIVER

### Installation instruction – How to insert the Skylane Optics® transceiver in a switch?

1. Insert the transceiver with the dust cap facing out.
2. Remove the dust cap carefully.
3. Connect the clean fiber LC-connector to the transceiver.
4. Make sure the connection is working.



> TRANSCEIVER LATCH DOWN

### Removal instruction – How to remove the Skylane Optics® transceiver from a switch?

1. Press the fiber connector and pull to remove the fiber.
2. Put on the dust cap on the fiber patch cord.
3. To remove the transceiver, begin by pulling the transceiver latch down and then pull the transceiver out.
4. Carefully remove the transceiver from the switch.
5. Put the dust cap back on the removed transceiver.